

# Town of Brookhaven Accessibility Guide



## **Supervisor Edward P. Romaine**

Valerie M. Cartright, District 1	Michael Loguercio, District 4
Jane Bonner, District 2	Neil Foley, District 5
Kevin LaValle, District 3	Daniel Panico, District 6
Donna Lent, Town Clerk	Louis Marcoccia, Receiver of Taxes
Daniel P. Losquadro, Highway Superintendent	

*A Message from  
Brookhaven Town Supervisor  
Edward P. Romaine*



I encourage you to look through this guide to learn about the many accessible programs and services Brookhaven Town offers to its residents, as well as information for employment and emergency services. As a community, it is important we work together to include everyone in our efforts to make Brookhaven Town the best place for all residents.

The Town of Brookhaven has ADA compliant facilities throughout the town, ensuring all residents can engage in healthy activity and remain active members of our community. From our pools and parks, to beaches and ball fields, providing accessibility to all Town residents remains a top priority.

On September 30, 2014 the Town Board adopted my resolution to establish the Town of Brookhaven Disability Task Force. This Task Force reflects the growing population of persons with disabilities, as well as their caretakers and family. The success of the Disability Task Force will have a significant impact on the social and economic future of the Town of Brookhaven.

*Edward P. Romaine*

# Mission Statement

The mission of the Brookhaven Disability Task Force is to provide the Town Board with information and recommendations. This will help the Town in its continuous efforts to develop programs and improve facilities in order to accommodate and offer equal opportunities for residents with disabilities to be active members of our community.

## About Us

The Task Force is comprised of volunteers who reside within Brookhaven Township. We are advocates, service providers, non-profits, parents of children in special education, caretakers and concerned citizens. We strive to provide awareness, improve, strengthen and expand programs and services for people with disabilities throughout Brookhaven Town.

**Visit our website at:**

[BrookhavenNY.gov/Disability](http://BrookhavenNY.gov/Disability)



**Brookhaven Town Disability Task Force**

**Presents**

**NEW  
DATE!**

**SENSORY  
FRIENDLY  
EVENT!**

# **Annual Youth Abilities Resource Fair**

**MUSIC • ART • SOCIAL SKILLS • ACTIVITIES • COOKING  
HEALTH & WELLNESS • TRANSPORTATION & MORE!**

**SATURDAY, April 27, 2019**



**11:00AM - 2:00PM**

**Middle Country Public Library**

**101 Eastwood Blvd., Centereach, NY 11720 • 631-451-6284**

**Pre-register for this FREE event for a chance to WIN a prize**

**RSVP at: [BrookhavenNY.gov/YAD](http://BrookhavenNY.gov/YAD)**

**Please join us for a fun-filled day and learn about the  
resources available for your child in the Town of Brookhaven.**

- ✓ 40+ RESOURCE TABLES
- ✓ OCCUPATIONAL THERAPY  
STUDENT VOLUNTEERS

- ✓ GUEST SPEAKERS
- ✓ SUPERVISED, INTERACTIVE  
CHILDREN'S ACTIVITIES

**Multiple chances to win  
family-fun Prizes!**

For more information email [chymowitz@brookhavenny.gov](mailto:chymowitz@brookhavenny.gov) or call 631-451-6284





# **Last Year's Participants**

## **Safety & Emergency Maintenance**

1. NYSTART Long Island, provides crisis prevention and response services to individuals with disabilities - [www.opwdd.ny.gov/nystart/long-island-start](http://www.opwdd.ny.gov/nystart/long-island-start)
2. Suffolk County Police Department - [www.suffolkcountyny.gov](http://www.suffolkcountyny.gov)
3. Suffolk County Department of Fire, Rescue and Emergency Services - [www.suffolksbravest.com](http://www.suffolksbravest.com)
4. Guide Dog Foundation for the Blind/America's Vet Dogs - [www.guidedog.org](http://www.guidedog.org)

## **Meal Preparation**

1. Baking Coach – [www.bakingcoach.com](http://www.bakingcoach.com)

## **Education**

1. Cleary School for the Deaf - [www.clearyschool.org](http://www.clearyschool.org)
2. Consulting that Makes a Difference - [www.cmdi.us](http://www.cmdi.us)
3. Children's Museum of East End - [www.cmee.org](http://www.cmee.org)

## **Driving and Community Mobility**

1. Destination Accessible - [destinationaccessible.com](https://destinationaccessible.com)
  - a. [Search for accessible leisure locations](#)
  - b. [Recommend accessible leisure locations](#)
2. Suffolk Transportation - [www.sct-bus.org](https://www.sct-bus.org)

## **Health Management**

1. Angela's House - [www.angelashouse.org](https://www.angelashouse.org)
2. Dr. Andrea Libutti, Author of Awakened by Autism -  
and [www.realibutti.com](https://www.realibutti.com)
3. EPIC - [www.efli.org/epilepsy-services](https://www.efli.org/epilepsy-services)
4. Head Injury Association - [www.headinjuryassoc.org](https://www.headinjuryassoc.org)
5. HRHCare Community Health - [www.hrhcare.org](https://www.hrhcare.org)
6. Meditation Center - [www.meditationonlongisland.org](https://www.meditationonlongisland.org)
7. Association for Mental Health & Wellness (MHAW) Children Care Management Program –  
[www.mhaw.org/programs/health-home-care-management-for-children](https://www.mhaw.org/programs/health-home-care-management-for-children)
8. SBU Health & Counseling -  
[www.stonybrook.edu/commcms/studentaffairs/caps](https://www.stonybrook.edu/commcms/studentaffairs/caps)
9. United Health Care - [www.uhc.com](https://www.uhc.com)

## **Work/Volunteer**

1. The Corporate Source - [www.thecorporatesource.org](http://www.thecorporatesource.org)
2. YAI Brentwood - [www.yai.org](http://www.yai.org)
3. Suffolk County Boy Scouts - [www.sccbsa.org/specialneeds](http://www.sccbsa.org/specialneeds)

## **Play/Social Participation**

1. Camp Pa Qua Tuck - [www.camppaquatuck.com](http://www.camppaquatuck.com)
2. Central Suffolk Challenger Little League - [www.eteamz.com/centralsuffolkchallengerll](http://www.eteamz.com/centralsuffolkchallengerll)
3. Chocology Unlimited (LEGO) - [www.chocologyunlimited.com/pages/chocolate-and-legos](http://www.chocologyunlimited.com/pages/chocolate-and-legos)
4. Dew Drop Inn - [www.dewdropinnsn.org](http://www.dewdropinnsn.org)
5. Great Strides LI - [www.greatstridesli.org](http://www.greatstridesli.org)
6. Inclusive Sports & Fitness - [www.inclusivesportsandfitness.org](http://www.inclusivesportsandfitness.org)
7. Jam Boxx - [www.jamboxx.com](http://www.jamboxx.com)
8. Think Big Theater Arts - [www.thinkbigtheaterarts.org](http://www.thinkbigtheaterarts.org)
9. Third Eye Sight - [www.visionaware.org](http://www.visionaware.org)
10. Pop Earth - [www.popearth.org](http://www.popearth.org)
11. Southampton Fresh Air Home (camp) – [www.sfah.org](http://www.sfah.org)

## **Play/Social Participation**

1. The Music Academy for Special Learners - [www.music4speciallearners.com](http://www.music4speciallearners.com)
2. Think Big Theater Arts - [www.thinkbigtheaterarts.org](http://www.thinkbigtheaterarts.org)
3. Third Eye Sight - [www.visionaware.org](http://www.visionaware.org)

## **Family Resources**

1. Able Newspaper - [www.ablenews.com/long-island-edition](http://www.ablenews.com/long-island-edition)
2. Down Syndrome Advocacy Foundation (DSAF) - [www.dsafonline.org](http://www.dsafonline.org)
3. North Shore Youth Council (NSYC) - [www.nsync.com](http://www.nsync.com)
4. Youth Power - [www.youthpowerny.org](http://www.youthpowerny.org)
5. Sensible Sisters - [www.abetterbutton.com](http://www.abetterbutton.com)

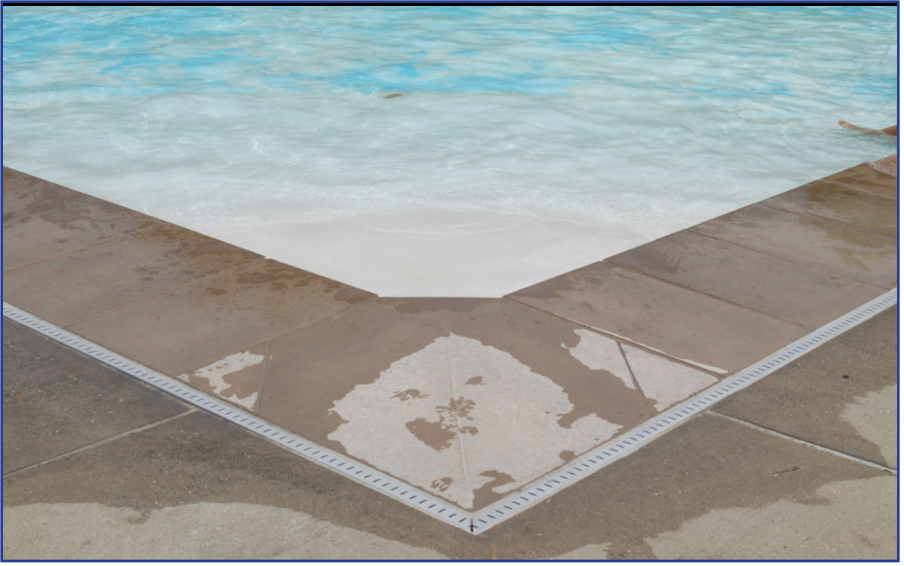
## **Brookhaven Town Operates Three ADA Compliant Pools**

These three pools are located in Centereach, Holtsville and Mastic Beach. All sites offer the ADA compliant PAL (Portable Aquatic Lift), which has become the industry standard for providing accessibility to swimming pools. Each facility has handicap accessible bathrooms, and the Aquatic Center in Mastic Beach provides a family changing room where parents and guardians can tend to children and older adults with disabilities before and after entering the pool. Family changing rooms are offered at the Centereach and Holtsville pools upon request. For further information regarding these three locations, please call (631) 451-8696.



The Portable Aquatic Lift at the Centereach Pool.





The view of the ADA accessible Zero Entry wading pool in Holtsville. The slope gradually gets deeper, just like a natural beach, without stairs or ladders to navigate. This is very useful for seniors, children and people with accessibility issues.



A view from the Portable Aquatic Lift at the Brookhaven Aquatic Center in Mastic Beach. This indoor pool is open year round with temperatures averaging from 84 to 86 degrees!

# **Eagle Estates Park**

## **Wave Avenue Medford, NY**



### **Adaptable Swing**



Parks with Adaptive Swings:

Ridege Park • Continental Park • Sylvan Park • Peppermint Park • Moriches Complex • Martha Ave Park • Wave Ave Park



## **West Meadow Beach In East Setauket**

West Meadow Beach in East Setauket provides wheelchair access to view the beach and a mile long stretch of roadway that offers astonishing views. You will see Smithtown Bay to the west and West Meadow Creek to the east. This portion of the road has restricted motor vehicle access for the safety and tranquility of residents.

The beach located to the north of the parking lot is the perfect place to watch a sunset on the weekend or after work. While enjoying the sights and sounds, a visit to West Meadow Beach quickly makes you realize why people travel from all over the world to Long Island, and why the residents of Brookhaven are grateful to call our Town home.

For further information about West Meadow Beach, please call the Parks Department at 631-451-8696 or visit <http://bit.ly/2kW6zlB>





# **Brookhaven Town's Cedar Beach Nature Conservancy**

Our Mount Sinai accessible trails can be accessed from the parking lot located along Harbor Beach Road. You will also find the Town's Cedar Beach Marine Environmental Stewardship Center. Just south of the center there is an accessible bridge leading to a gorgeous sitting area where everyone can relax in tranquility. It's a great place to bring lunch or just sit and admire all that Long Island has to offer.

The Stewardship Center is open Memorial Day to Labor Day, Thursday through Sunday from 10:00 am to 4:00 pm. During September and October, it is open Thursday and Friday from 10:00 am to 4:00 pm, and from November through April by appointment only. For a personal tour or to find out more about the many programs offered, please call 631-451-8696.









## **Eastport-South Manor Athletic Complex**

Whether your view is coming from right field or behind home plate, the Eastport-South Manor Athletic Complex provides accessibility for viewing around all three of its diamonds. Handicap accessible bathrooms are available for use. The complex is located just east of County Road 51, off of the Sunrise Highway South Service Road. For further information regarding these fields, please call 631-451-6133



## **Moriches Athletic Complex**

The Moriches Athletic Complex is located along Moriches-Middle Island Road, across from William Floyd Middle School. A wide pathway between the fields provides plenty of opportunity to choose where you want to watch the game. Handicap accessible bathrooms and picnic tables are available for use. For further information regarding these fields, please call 631-451-6133



**Kalers Pond Park**, located at 21 Main Street in Center Moriches, provides accessibility access with sublime scenery. The wide pathways include handrails and there is access to a picnic area where you can view the water. After having lunch and traversing the park, you can visit the Flight 800 Memorial on the north side of the parking lot. Handicap bathrooms and picnic tables are available for use. For further information regarding these fields, please call (631) 451-6133



**BALLFIELD:** Located off of South Bicycle Path within the grounds of the Brookhaven Memorial Hospital Medical Center Amphitheater in Farmingville, this ADA compliant field allows people of all ages and disabilities to enjoy playing our national pastime





**MOBI-MATS:** Brookhaven Town has mobi-mats available at Corey Beach in Blue Point, West Meadow Beach in East Setauket and Cedar Beach in Mount Sinai. These mats make traversing these beaches easy and accessible. For further information regarding these beaches, please call (631) 451-8696.





**RAISED FLOWER BEDS:** By having these flowerbeds at the Town's Holtsville Ecology Site, children of all abilities will be able to engage in horticultural activities and learn about plant life sustainability.





**RAISED FLOWER BED DIRECTIONS:** See the map below for specific directions to the raised flower beds at the Holtsville Ecology Site



# Brookhaven Safety Town at the Hostville Ecology Site

Designed to offer children instruction in traffic safety as well as pedestrian and bicycle safety. Adaptable bicycles are available for children with different abilities. For more information, please call 631-363-3770.



## **Town of Brookhaven Programs** **and Accessible Services**

The Town of Brookhaven **Residential Rehab and Home Accessibility Program** will assist homeowners to provide ramps or retrofit areas of your home: 631-451-6600

The Brookhaven **Jitney Transportation Program** will provide transportation to Brookhaven seniors and disabled residents who have no other means of transportation for doctor visits and shopping: 631-451-9081

**Handicapped Parking Applications** for Permits are available at the Town Clerk's Office: 631-451-9101

**STAR Program:** Town of Brookhaven Assessor's Office: 631-451-6205

**Special Recreation Parks Programs:** 631-451-6108

**Wheelchair Sports Program:** 631-451-6992



## **Emergency Services**

Suffolk County Office of Emergency Management's **CodeRED** is an emergency notification service that allows emergency officials to notify residents and businesses by telephone, cell phone, text message, email and social media regarding time-sensitive general and emergency notifications. For more information on these notifications, call 631-852-4900.

**Brookhaven Public Safety:** 631-451-6291



This program combines technology and specially trained Sheriff's Deputies to locate individuals who have wandered. Project Lifesaver clients wear a "watch type" wristband transmitter, which emits a tracking signal. When a caregiver calls the Suffolk County Sheriff's Office Project Lifesaver line to report a client has wandered, a search team responds to the wanderer's area and, while in route, activates the vehicles mobile locator tracking system. A hand held unit is used to search for clients in areas inaccessible by vehicles.

Enrollment applications can be obtained by calling:

631-852-3003

[projectlifesaver.org](http://projectlifesaver.org)





## **Employment Links**

Job Accommodation Network (JAN)

[www.askjan.org](http://www.askjan.org)

1-800-526-7234

American Association of People With Disabilities Career Center

[www.jobs.aapd.com](http://www.jobs.aapd.com)

Universal Abilities Employment Network

[www.universalabilities.net](http://www.universalabilities.net)

631-880-7929

New York State Industries for the Disabled - NYSID

[www.nysid.org](http://www.nysid.org)

1-800-221-5994



## **Transportation Links and Phone Numbers**

Suffolk County Transit: [www.sct-bus.org](http://www.sct-bus.org)

631-852-5200

Suffolk County Accessible Transportation: (SCAT)

[www.sct-bus.org/scat.html](http://www.sct-bus.org/scat.html) - Reservation For Rides

631-738-1150 / TTY 631-981-0104

Accessible Vehicle Rentals:

[www.bussanimobility.com/wheelchair-van-rentals](http://www.bussanimobility.com/wheelchair-van-rentals)

888-379-4709

511NY Get Connected To Go: Traffic, Travel and Transit Information

[www.511ny.org](http://www.511ny.org)



# **DISABILITY LINKS**

## **Child Care Council of Suffolk County:**

[www.childcaresuffolk.org](http://www.childcaresuffolk.org)

Email: [resourcereferal@childcaresuffolk.org](mailto:resourcereferal@childcaresuffolk.org)

## **The Long Island Advocacy Center:**

631-234-0467

[www.theliac.org](http://www.theliac.org)

Email: [info@theliac.org](mailto:info@theliac.org)

## **Long Island Communities of Practice:**

631-668-4858

[www.licop.org/information](http://www.licop.org/information)

Email: [info@licop.org](mailto:info@licop.org)

## **Suffolk County Office for People with Disabilities:**

631-853-8333

[www.suffolkcountyny.gov/Departments/CountyExecutive/PeoplewithDisabilities.aspx](http://www.suffolkcountyny.gov/Departments/CountyExecutive/PeoplewithDisabilities.aspx)

## **Talking Books Library:**

[www.nypl.org/locations/heiskell](http://www.nypl.org/locations/heiskell)

## **Disability Rights New York (DRNY)**

The Protection & Advocacy System and Client Assistance Program:

518-432-7861

[www.drny.org](http://www.drny.org)

## **Social Security Administration:**

1-800-772-1213

[www.ssa.gov](http://www.ssa.gov)

**New York State Self Advocacy Association - Long Island Region:**

631-434-6936

[www.sanys.org](http://www.sanys.org)

**U.S. Official ADA site at the Department of Justice:**

[www.ada.gov](http://www.ada.gov)

**Suffolk Independent Living Organization (SILO):**

631-880-7929

[www.siloinc.org](http://www.siloinc.org)

Email: [info@siloinc.org](mailto:info@siloinc.org)

**Information on ADA Rights & Responsibilities:**

1-800-949-4232 (Voice, TTY & Spanish)

[www.northeastada.org](http://www.northeastada.org)

**Home Energy Assistance Program (HEAP):**

631-853-8326

[www.otda.state.ny.us/main/heap](http://www.otda.state.ny.us/main/heap)

**PSEG Electric Service:**

If you rely on electricity to operate life-sustaining electronic equipment, such as a respirator or dialysis machine, let PSEG know:

1-800-436-PSEG

**Town of Brookhaven**  
**Department of Housing and Human Services**

One Independence Hill, 3rd Floor  
Farmingville, NY 11738  
631-451-6600

[www.BrookhavenNY.gov](http://www.BrookhavenNY.gov)

Alison Karppi, Commissioner  
Clifford Hymowitz, Accessibility Liaison  
[chymowitz@brookhavenny.gov](mailto:chymowitz@brookhavenny.gov)

**Brookhaven Disability Task Force**

Marlene Patti, Chair

Sonia Mehmood , Secretary

Angela L. Melledy

Bob Mongillo

Bridget Costello

Diane Van Velsor

Dorothea Daniels

Glenn F. Campbell

Hedi Flickstein

Jenny Anderson

Jill Cloonan

Melba Pabon

Melissa Pandolf

Roy Probeyhan

Compliance Committee Chair

Glenn F. Campbell

